

Westmount Estates



Greenacres, London, SE9 5BE

£1,750 PCM

Situated on this ever popular estate with a superb communal garden backing on to royal Blackheath golf course. Westmount Estate have pleasure in offering this ground floor two bedroomed balcony flat.

Internally there is a sizeable lounge which is open plan to the dining room, fully fitted kitchen, two well appointed bedrooms, bathroom and separate w/c. We strongly recommend an internal viewing to avoid disappointment.

COMMUNAL ENTRANCE



DINING ROOM



ENTRANCE HALL

LIVING ROOM



BEDROOM ONE



KITCHEN



BEDROOM TWO



BATHROOM



SEPARATE TOILET

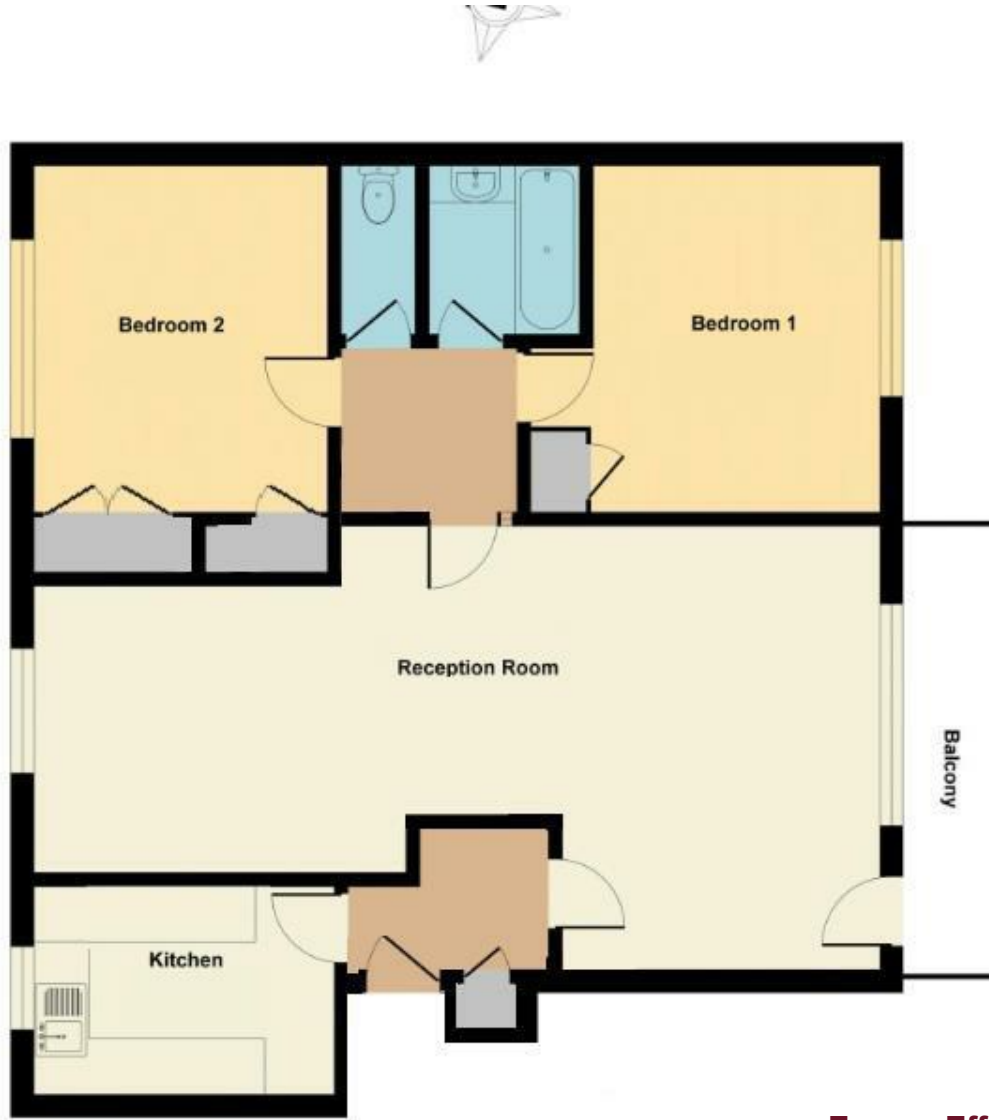
PRIVATE BALCONY



COMMUNAL GARDEN



Floor Plan



Area Map



Energy Efficiency Graph

Energy Efficiency Rating		Current	Potential
Very energy efficient - lower running costs			
(92 plus) A			
(81-91) B			
(69-80) C		70	78
(55-68) D			
(39-54) E			
(21-38) F			
(1-20) G			
Not energy efficient - higher running costs			
England & Wales		EU Directive 2002/91/EC	
Environmental Impact (CO ₂) Rating		Current	Potential
Very environmentally friendly - lower CO ₂ emissions			
(92 plus) A			
(81-91) B			
(69-80) C			
(55-68) D			
(39-54) E			
(21-38) F			
(1-20) G			
Not environmentally friendly - higher CO ₂ emissions			
England & Wales		EU Directive 2002/91/EC	

These particulars, whilst believed to be accurate are set out as a general outline only for guidance and do not constitute any part of an offer or contract. Intending purchasers should not rely on them as statements of representation of fact, but must satisfy themselves by inspection or otherwise as to their accuracy. No person in this firm's employment has the authority to make or give any representation or warranty in respect of the property.